

# Temple Emanuel Bulletin

## Connecting Generations

Volume 66 No. 9 | April 2024 | Adar II - Nissan 5784



*More about the cover photo on page 4*



**Learn more about Temple's Passover  
happenings on page 9**

*Many of the photos used in our publications are thanks to Ivan Saul Cutler.*



# 2024 GREENSBORO JEWISH FESTIVAL AT TEMPLE EMANUEL

APRIL 7, 2024 | 11AM-5PM

RAIN OR SHINE

**DELICIOUS JEWISH FOOD •  
KIDS' INFLATABLES, CRAFTS &  
SWEETS • ARTISANS •  
ENTERTAINMENT & MUSIC •  
SANCTUARY TOURS •  
EDUCATIONAL ACTIVITIES**



**Become a "Friend of the Festival" with a \$100 donation. Friends' names will be listed on the festival web page**

## **PREMIER SPONSORS**

Blue Ridge Bank

Our State Magazine

Flow Lexus of Greensboro

## **PLATINUM SPONSORS**

Well-Spring

Steven Tanger Center for the  
Performing Arts

## **GOLD SPONSORS**

Delman and Company CPAs  
Association Management Group, Inc.



Temple Emanuel | 1129 Jefferson Road | Greensboro, NC



GreensboroJewishFestival



@gsojfest

www.gsojfest.org

| (336) 292-7899

# Leave an Empty Chair at Your Seder Table This Year



Freedom is one of the central messages of the Torah. In the first of the 10 Commandments, God is identified as the Source of Freedom. Passover may be our time of gathering with family and/or friends, but its deepest significance is the Jewish people's mission

statement: freedom from oppression.

I hope and pray every day, as I have since October 7th, that the hostages being held in Gaza by Hamas and other terrorist forces will be free and back where they belong: in Israel.

Perhaps by later this month, when we sit at our tables for Passover, what I am writing here will be irrelevant.

But in case it is not, our seders this year cannot only be about freedom for others. This year, our calls for freedom need to start with freedom for our own.

Which is why I hope that you will leave an empty chair at your seder this year.

This is not a new thing. When I was in college, we left an empty chair at our seder table to recognize the plight of Soviet Jews as well as Prisoners of Zion, heroes such as Natan Sharansky who was imprisoned by the KGB for the "crimes" of wanting to learn Hebrew and one day live in Israel.

For five years from the summer of 2006 until October 2011, Temple Emanuel had an empty chair on our bimah for Gilad Shalit, an Israeli soldier kidnapped from Israel and held by Hamas terrorists in Gaza. Each year at Passover, we kept an empty seat open for him.

Once again, a chair is on our bimah. This time it is not just for one, but for 134. You can see them and their stories at: <https://stories.bringthemhomenow.net/>

In Tel Aviv's Hostage Square, there are a number of "exhibits" with empty chairs.

Now, it is up to us to bring these calls for freedom from the open square into our homes. Some may decide to put a printout of the names of the hostages on their chair, others might put the picture which has all of their faces on it, while still others might put a picture of one of the hostages. Other creative variations, the hallmark of

seders from time immemorial, abound.

The key thing is to leave that empty chair. And talk about it.

As hard as it is, we must talk with family and friends about the times we are living through and how unacceptable it is that members of our extended family are being held captive. Moreover, we need to lift up how we and other Jewish communities have been subjected to a spike in antisemitism that has seen a local Holocaust memorial defaced, students from elementary school through the college level harassed, elected leaders and those seeking office pandering in hate speech against us and our people, and Jewish religious and communal gathering places needing to be on unprecedented alert.

This year, let's also say the following prayer at our seders, perhaps in the section before dinner or when we open the door for Elijah towards the end of the night:

*"For our family, the whole house of Israel, who are in distress, or in captivity – who stand either in the sea or on dry land – may God have mercy on them and take them out from narrowness to expanse, and from darkness to light, and from oppression to redemption, now, swiftly, and soon!"*

Michal and I, together with our family and everyone at Temple, wish you and yours a meaningful and liberating Passover. May the time come soon when our people, and all people, will be free from captivity, when war will no longer plague our world, and when all will live as kind and accepting neighbors.

*Rabbi Andy Koren*

Senior Rabbi



These empty chairs around a table stand as an ongoing reminder of the remaining hostages being held in Gaza by Hamas. The Hebrew sign says: "Bring our most treasured loved ones back to us now, no matter the cost."



## URJ 6 Points Announcement

On July 13<sup>th</sup>, URJ 6 Points Sports Academy will celebrate 15 Summers of impacting the lives of young Jewish athletes. 6 Points Sports was launched in Greensboro as a Jewish specialty summer camp; since 2021, its sessions are held in Asheville, NC.

To celebrate 15 Summers, 6 Points Sports will welcome alumni back to camp, and induct new members into our Hall of Fame, including **Rabbi Andy Koren** and **Coach Alan Ashkinazy**, from our very own congregation and community. Their dedication to 6 Points has been incredible and we are excited to honor them. If

you would like to congratulate and pay tribute to Rabbi Andy or Coach Al, please consider placing an ad in our digital tribute book. More info can be found at <https://6pointssports.org/hall-of-fame/> or by reaching out to our Development Director, Shaina Sugar at [ssugar@urj.org](mailto:ssugar@urj.org) with any questions. We hope to 'see ya at the 6!'



## Cover Photo: New Art Installation at Temple



If you have been to Temple recently, you may have noticed a new art installation next to the front entrance.

It is built to look like a road sign with one word on it in Hebrew: **Yerushalayim**.

**Yerushalayim**, or Jerusalem in English, is to our east which is where this Jerusalem-quarried limestone sign is pointing. In smaller characters under the Hebrew it says "6140 mi." which is the distance from Greensboro to Jerusalem.

In addition to the statue's simple beauty, there are so many creative ways to interpret its design, including why it is pointing slightly upwards.

Dr. Jerry Plovsky deserves tremendous credit for dreaming up this project, working with dozens of people to assist with the design and the funding, and managing the many conversations with Temple stakeholders and decision-makers.

We will be celebrating its official dedication during Shabbat Services on Friday, May 17. Join us at 6:00pm, prior to services, when we will step outside to dedicate the installation. During the service, Dr. Plovsky will share with us the journey he took and the people who helped to make this idea a reality!

## Second Jewelry Sale

Temple Emanuel Sisterhood's second Jewelry Sale is scheduled for November 10, 2024, from 11am to 4 pm. Collection boxes are at the front office and the check-in table at Friday and Saturday Shabbat Services. Receipts are available at jewelry collection boxes for those desiring a record of their donation.



## Upcoming Community Yoms



### Community Yom HaShoah Commemoration

**Sunday, May 5 at 7:00pm**

Join the community at Temple Emanuel on May 5 at 7:00pm for the Community Yom HaShoah Commemoration Service. We will be hearing from Shelly Weiner as she recounts her story for the community.

### Community Yom Ha'Atzmaut Celebration

**Tuesday, May 14 at 5:30pm**

Join the community at Beth David Synagogue on May 14 at 5:30pm to celebrate Israel's Independence.



### Yom Tikkun Olam

**Sunday, May 19 at 9:00am**

Join the community at Beth David Synagogue for Yom Tikkun Olam, previously known as Mitzvah Day.

There will be breakfast, new projects, and new opportunities to participate in *tikkun olam* year around.



# April Events

RSVP to these events at [www.tegreensboro.org/upcomingevents](http://www.tegreensboro.org/upcomingevents)

## "First Friday" Shabbat at Greene Street | April 5 | 6:30pm

Join us for Shabbat Services at 713 North Greene Street. The service will also be livestreamed on Temple's Facebook and Vimeo pages.



Scouts, Trailblazers,  
Pathfinders, Explorers:  
A History of Women  
Rabbis

With Rabbi Libby Fisher  
Wednesday evenings  
March 27, April 3, 10, and 17 at 7pm  
In-person AND Online

## A History of Women Rabbis | Wednesdays, April 3, 10, and 17 | 7:00pm | Hybrid

In this series, we will spotlight a few of the significant women from the 1500s to the early modern period who held quasi-rabbinic status in their communities, and compare and contrast the ordinations of Rabbis Sally Priesand and Regina Jonas. (Who? Come find out!)

## Ladies Who Lunch | Tuesday, April 9 | 12:00noon

Ladies Who Lunch will take place at Bravo on Tuesday, March 12th at noon. RSVP to Barbara Scheck at 336-288-8630 or email [beezart@aol.com](mailto:beezart@aol.com). We are limited to 12 guests.



## Shabbat B'yachad | Friday, April 12 | 5:00pm

Join us for a Family Shabbat service and dinner with your Temple Emanuel family. ***This program is designed for families with children in second grade or younger.*** ***RSVP Required by Wednesday, April 10. Please sign up on the Temple website, cost is \$5 per person.***

## Kehillah Wellness Workshop: Managing Stress | Sunday, April 14 | 10:00am

Join Ariel Rubin for Kehillah Wellness workshops at Temple Emanuel! Ariel Rubin is a Keshet teacher and a Holistic Health Practitioner of R. E. L. HEALING ARTS, a wellness platform to support individuals and companies (R)estore and (E)levate (L)ife. RSVP online. No charge to attend.



## Mahjong | Wednesday, April 17 | 6:30-8:30pm

Do you like to play mahjong? Come join us at Temple Emanuel on the 1st and 3rd Wednesday of each month. Please reserve a spot online so we set up your table. Nancy Swanson and/or Sheryl Hirsh will be there to help. So grab your friends, and come play with us! Don't forget to bring your mahjong cards with you. *Please use the Administrative Entrance; front doors are kept locked for this program.*



## Temple Emanuel's Stitching Group | Mondays | 1:00-3:00pm

Please join us in the Temple Emanuel library on Mondays at 1:00p, for fun and friendship while you work on your projects. Email [carolrauch@me.com](mailto:carolrauch@me.com) for questions and suggestions.

## Coffee & Connections | Fridays | 10:00am | on Zoom

Connect with Temple Members through casual conversation during Coffee & Connections every Friday at 10:00a on Zoom. Grab your beverage of choice and join us!

## Chevre Torah | Saturday mornings | 9:00 - 10:30am | In-person or on Zoom

The community is welcome to join us every Saturday morning at 9:00a, for our master class, Chevre Torah. This study group, led by one of our rabbis, explores the weekly Torah portion. No prerequisite knowledge is needed and all are welcome to attend. Participation is free.



## Temple Emanuel Calendar of Events

March 2024 | Adar I - Adar II 5784

Information is subject to change.

Confirm at [www.tegreensboro.org](http://www.tegreensboro.org) or with the Temple office.**April 2024**

Sun	Mon	Tue	Wed	Thu	Fri	Sat
	1	2	3 6p Festival Volunteer Meeting	4 6:00p Executive Committee Meeting	5 10a Coffee & Connections 6:30p Shabbat Service at Greene Street	6 9a Chevra Torah w/ Kaddish
7 11a Greensboro Jewish Festival	8 1p Stitching Group 6:30p Terumah Committee Meeting 7:30p Board of Trustees Meeting	9 12p Ladies Who Lunch 5p Keshet 6p Membership Committee Meeting	10 6:30p Women in the Rabbinate Class	11	12 10a Coffee & Connections 5p Shabbat B'yachad 6:30p Shabbat Service	13 9a Chevra Torah 10:30a Shabbat Morning Service 6p Saging Class
14 9:30a Keshet 10a Kehilah Workshop 10:30a Festival Meeting	15 1p Stitching Group	16 5p Keshet	17 12p Community Senior Seder 6:30p Mahjong 6:30p Women in the Rabbinate Class 7p Cemetery Committee Meeting	18	19 10a Coffee & Connections 6:30p Shabbat Service	20 9a Chevra Torah w/ Kaddish
21 9:30a Keshet 12:15p Prince of Egypt and the Midrashim	22 1p Stitching Group	23 <b>Temple Office Closed</b> 4p L'Dor VaDor Family Seder 6p Second Night Seder	24 <b>Temple Office Closed</b>	25	26 10a Coffee & Connections 6:30p Shabbat Service	27 9a Chevra Torah 10:30a Passover Shabbat Morning Service
28 9:30a Keshet 10a Brotherhood Meeting 5:30p Matzah Pizza Party	29 5:45p Passover Yizkor Service at Greene Street	30 12p Sisterhood Book Club 5p Keshet			Key ■- Adult Education ■- Committee Meetings ■- Kids Programs ■- Services ■- New/Special Programs ■- Social Programs ■- Community Events	



## Passover at Temple



### Passover is on its way!

Join us at Temple for our Second Night Seder on Tuesday, April 23 at 6:00pm. If you are a family with young children, we encourage you to join us for our (shorter) L'Dor VaDor Family Seder at 4:00pm. Visit the Temple website to register for the seders and see the menu for the evening.

### L'Dor VaDor Family Seder | Tuesday, April 23 at 4:00pm

Rabbi Fisher and Rabbi Koren will lead us through a mini Seder featuring traditional Seder foods, fun songs, and connecting with friends!

This is a family seder with families with young children. There will be Passover noshes but no dinner. It is \$5 per adult and children under 13 are free.

NOTE: This is not a dinner, but some noshes will be served along with the traditional seder foods (matzah, parsley, charosets, maror).

**RSVP by Friday, April 19th**

### Congregational 2nd Night Seder | Tuesday, April 23 at 6:00pm

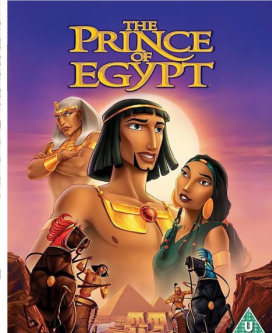
Temple Emanuel's Second Night Congregational Seder will take place at 6:00pm on April 23. If you need financial assistance to attend the seder, please call the Temple office so we may assist you.

**RSVP by Friday, April 19th at 12noon**

## Passover at Temple



### PRINCE OF EGYPT AND RABBINIC MIDRASHIM



With Rabbi Libby Fisher  
Sunday, April 21 at 1pm  
In-person only

### Prince of Egypt and Rabbinic Midrashim

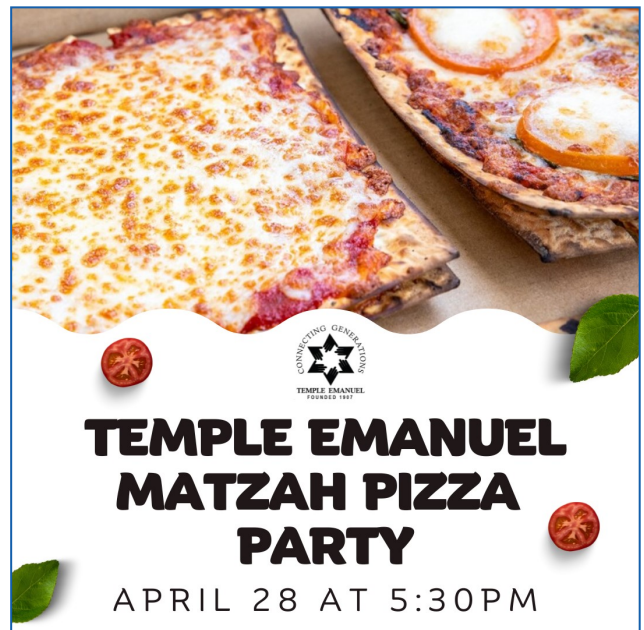
Sunday, April 21 at 1:00pm

The Dreamworks film The Prince of Egypt is a classic animated retelling of the Exodus narrative - but did you know it is firmly grounded in rabbinic midrashim (stories) that expand upon the Torah's details? Join Rabbi Fisher to watch the movie and explore the stories on which it is based.

### Matzah Pizza Party

Sunday, April 28 at 5:30pm

Join us at Temple Emanuel on Sunday, April 28 at 5:30pm for a Matzah Pizza Party! This will be fun for all ages, there will be a Matzah Pizza making station and Passover themed cocktails.



## Passover Events and Services

### Prince of Egypt Class

Sunday, April 21 at 1:00pm

### Passover Shabbat Service

Friday, April 26 at 6:30pm

### Passover Shabbat Morning Service

Saturday, April 27 at 10:30am

### Matzah Pizza Party

Sunday, April 28 at 5:30pm

### Passover Yizkor Service (Greene Street Campus)

Monday, April 29 at 5:45pm



## April Birthdays and Anniversaries

### Adult Birthdays

1 Heather Benson	16 Michael Smith
Stefanie Bates	17 Barbara Pomer
Jack Wittner	Betty Kittner
2 Sharon Heller	Adrienne Blocker
Michelle Hoffman	Hope Gruber
3 Leah Strulson	Stuart Katz
Steve Bernstein	Jim Robinson
Betty Roth	18 Tom Sloan
Maribeth Geraci	Carol Levin
4 Norman Regal	19 Danny Gottsegen
Michele Rieder	Howard Cumins
5 Ellyn Steinhorn	Paul Barry
Joan LeBauer	Allan Goldfarb
Michael Renne	Catherine Magid
6 Rodney Kranz	20 Bill Moran
7 Ilyssa Salomon	21 Justin Glazer
Samuel Roll	22 Midge Pines
8 Mike McKinney	Steve Scheck
Jacques Wayser	23 Aaron Weiner
Marcia Horowitz	24 Nathan Litwin
Gary Wolf	Jeff Reichle
Sheryl Gottlieb-Siar	Katelyn King
9 Jeff Katz	25 Luran Epstein
Harvey Colchamiro	JoAnn Weissman
David Gustafson	Gilda Friedman
10 Ellen Goldenberg	26 Marilyn
12 Hank Gutman	Anderson
13 Charlene Carr	27 Lisa Cone
Robin Gitlin	Sharon
14 Jerry Sagerdahl	Rothenberg
Mila Kilimnik	29 Henry Isaacson
Roz Reichle	Ed Hines
15 Sheldon Glick	30 Scott Cooper
Julie Bean	Jay Weininger
Janet Orenstein	
Henessy Wayser	

### Children Birthdays

1 Ethan Hoffman	11 Lucas Silverman
2 Declan Forman	14 Ava Ashkinazy
June Weiner	15 Benjamin Bressler
3 Aaron Brod	16 Brendan Neff
Gabriel Singerman	21 Kayla Rafkin
4 Sophia LeBauer	23 Audrey Miller
5 Lilly Gustafson	Michael Dunlevy
Riley Adler	24 Grayson Jeacoma
Max Lantos	25 Alex Herman
9 Ben Hoffman	27 Hannah McKinney
Lilith Younger	30 Annie Harbaugh
Abigail Younger	

### Anniversaries

1 Roz & Jeff Reichle	8 Susanne Baker
2 Devon & Steven	& Joseph Shelton
Edmonson	Kathy & Barry Frank
Henessy & Jacques	9 Sherry & Larry Camras
Wayser	14 Stephanie Bourland &
3 Barbara Pomer & Ed	Seth Cohen
Green	16 Lolly & John
5 Jessie & Andy	Schweninger
Schlosberg	20 Marla & David
6 Fern & Sandy Kahn	Schexnider
Martha & Randy	23 Jill & Marc Isaacson
Eisenberg	28 Teresa & David Tolin
7 Marlene & Gene	
Baruch	
Sandy Forman & Ugo	
Gramegna	

## Mazal Tov!

**Mazal Tov to Victoria and Graham Sheridan** on the birth of their son, Solomon "Sully" Leo Sheridan, on March 13. **Mazal Tov also to Solomon's grandparents: Ellen Sheridan and Desmond Sheridan.**

**Mazal Tov to Bobby and Kim Wainer** on the birth of their grandson, Hudson Harris Weiss, born to Ashley and Stephen Weiss on March 21. Congratulations also to Hudson's older sister, Oliva, and grandparents, Randi and Andi Weiss!



## April Yahrzeits



Please note that Shabbat Services and Chevra Torah will be held online and in-person this month, unless otherwise noted.  
Yahrzeits are read during Shabbat Services on Friday night and the following Saturday morning.  
(If there is no Saturday morning service, they will be read at the end of Chevra Torah, at approximately 10:15am)

### To be read at Shabbat Services on Friday, April 5, at 6:30pm at the Greene Street Campus & Saturday, April 6 (at the end of Chevra Torah)

Morris Goldstein  
Sylvia Grandon Goldstein  
\*Timothy Schwarz  
Ethel Clawson  
Greta Shulack  
Meyer Mackler  
\*Paul Snitzer  
\*Arthur Bluethenthal  
\*Frederic Schafer  
Robert Wilkins  
Howard Silverstein  
\*Martin Bernstein  
\*Nat Markowitz  
Nellie Liebling  
\*Samuel Zinan  
\*Florence Jacobson  
Mary Kalinowsky  
Myra Samuels

### To be read at Shabbat Services on Friday, April 12, at 6:30pm & Saturday, April 13, at 10:30am (at Shabbat Morning Services)

Marlene Ashkinazy  
Bill Shapiro  
Earl Bailey  
Helen Lauenstein  
Helen Schloss  
\*Jack Tannenbaum  
\*Roslyn Weinstein  
Shirley Eppler  
Thomas Drewry  
Blanche Debeauchamp  
\*Ellis Mark Fischer  
Fannie Colchamiro  
Lonnie Vick  
\*Selma Clein  
Beverly Bellinson  
Carl Dresser  
Leonard Kaplan  
Ethel Yari  
Mary Elizabeth Lustig

### To be read at Shabbat Services on Friday, April 19, at 6:30pm & Saturday, April 20 (at the end of Chevra Torah)

Amelia Deis  
Dorothy Solomon  
Jack Corday  
Lilian Fink  
\*Mary Segal  
\*Benjamin Marks, Sr.  
Ira Gutman  
Peter Liebling  
\*Frances Isaacson  
Gary Osborne  
\*Ruth Krantz  
Sarah Mackler  
Benjamin Goland  
Joan Feinsod  
\*Leo Goldfarb  
Ruth Gamburg  
\*Dorothy Stern  
Rita Blumenfeld  
\*Esther Heymann  
\*Fanny Falk  
William King  
\*Bettie Chandgie  
Faye Bernstein  
Judith Redlich  
\*Kate Pearl

### To be read at Shabbat Services on Friday, April 26, at 6:30pm & Saturday, April 27, at 10:30am (at Passover Shabbat Morning Services)

Gertrude Farb  
\*Becky Whetstone  
Eileen Miller  
Harold Tytell  
Koi Muurisepp  
\*Adolph Guyes  
Charles Adderholdt  
\*Doug Smith  
\*Gladys Greenberg  
Rita Morris  
Anne Smith-Foster  
Gerald Hirschhaut  
\*Joseph Wernick  
\*Max Wainer  
Michael Sommers  
\*Sophie Izrine Wayser  
Bobby C. Ross  
\*Charles Pearl  
David Basevin  
\*Harry Pines  
Ilene Miller  
Samuel Feldberg  
Luba Pius  
Dotty Kaufman  
Ellen Kreindler  
Steven Altheimer  
Suzanne Nunn  
William Stern

\* A yahrzeit plaque for these loved ones will be lit in the Memorial Room during the month of April.

## In Memoriam

**Ellen Berkelhammer Berlin**, Mother of Debra (John) Lewis and Carol (Josef) Silverman, Sister-in-law of Mary Berkelhammer, Aunt of Billy Berkelhammer, Howard Benson, Stephanie Benson and Paul Benson, on March 2.

**Deane Smigrod**, Wife of Seymour "Smig" Smigrod, of blessed memory, Mother of Andrew Smigrod and Daniel Smigrod, on March 7.

**Benjamin Cone, Jr.**, Husband of Elizabeth "Betty" Darden Ward Cone, Father of Benjamin "B.C." Cone, III (Millie Maxwell), and Samuel "Sam" Martin Cone (Trina), Grandfather of Darden Elizabeth Cone and William Wortham Cone, Brother of Jeanette Cone Kimmel and Anne Cone Liptzin (Myron), on March 23.



# Contributions

We are grateful to the following for their generous donations to Temple Emanuel's various funds.  
If you would like to make a contribution in memory or in honor of someone, please refer to the back page of this bulletin or go to [www.tegreensboro.org/donation](http://www.tegreensboro.org/donation).

## Cemetery Perpetual Care Fund

Ellen & Jim Holmes, in memory of Robert, Selma and Howard Clein

## Chesed Fund

Donna Allred, in memory of Camille Lancaster's brother, Arden

Peggy & Nat Bernstein, in memory of Brett Shapiro

Judy Kriegsman, in memory of Ellen Berlin

Grace Sheldon, in honor of all the good work the Chesed Committee does!

Mary Louise Penaz & Robert B. Vellani, in honor of Jewish eldercare residents in nursing homes

## Early Childhood Engagement Center

Irving and Francine Elson, in honor of Dr. Mateo Eckstat and the birth of their grandson, Crosby James Elson

## Friendship Circle

Lon Tytell, in memory of Rosita Tytell

Hope Gruber, in memory of Rochelle Rosen

## General Contribution

Thomas & Linda McKnight, in memory of Brett Shapiro  
Bernard Robinson and Company, in memory of Joan Milman  
Joanna Winston Foley, in honor of Chevra Torah

Ann Moceyunas & Daniel Simigrod, in memory of Deane Smigrod  
Susan Hill & Lester Moye, in memory of Deane Smigrod  
Jeffrey & Vicky Councilman, in honor of Chevra Torah  
Mary Louise Penaz & Robert B. Vellani, in honor of the Megillah Reading

Tobey Hartman, in memory of

Danny Hartman

Stetson Clark

Dana Moore

## 2024 Teacher Holocaust

### Educational Trip to Poland

Marc & Kay Fields, Sherry Dickstein

& Kurt Lauenstein, Kathy Manning &

Randall Kaplan, Stewart Mostofsky,

Deb Schoenhoff & Gerry Plovsky,

Linda & Jerry Shapiro,

Community Foundation of Greater

GSO President's Strategic Fund

## Jewish Festival Friends

Marlene & Gene Baruch, Rhonda

Broder-Dunlevy, Rhiannon

Cornelius & Zachary Kramer,

Wendee & Ivan Cutler, Cheryl

David, The Geier Family, Diane &

Robert Goldstein, Sharon & Joel

Heller, Brenda Henley, Rodna &

David Hurewitz, Judy Hyman,

Nancy Jacobs, Sue Klau, Eve & Jon

Knapp, Judy Kriegsman, Gail &

Gene LeBauer, Elaine Marks, Mike

& Kay Marshall, Stacey & Phil

Papier, Midge Pines, Marnie & Jerry

Ruskin, Beatrice Schall, Phyllis

Shavitz, Sue & Gary Simmons,

Mitchel Sommers, Strulson Family,

Amy & Joe Thompson, Nancy &

Allen Unger, Corky Segal &

Frederic Waxman, Rhoda & Jay

Winepol, Gary & Laura Wolf

## Jewish Festival Sponsors

Arosa

Association Management Group

Flow Lexus of Greensboro

Bank of America

## Rabbi Koren's Discretionary Fund

Donna Allred, in appreciation for the Ten Commandments Class and Rabbi Koren's recent solidarity trip to Israel

Donna & Mark Shapiro, in memory of Brett Shapiro and with gratitude to Rabbi Andy for his compassion

Sue & Rob Stevens, in memory of

Brett Shapiro

Jon & Marsha Glazman, in memory of Brett Shapiro

Isanne & Kevin Ossey, in memory of Brett Shapiro

Irving and Francine Elson, in appreciation of Rabbi Koren and the birth of their grandson, Crosby James Elson

Ann Moceyunas & Daniel Simigrod, in memory of Deane Smigrod and in appreciation of Rabbi Koren

Natasha Kobeleva, in appreciation of Rabbi Andy for his caring and help with Mila Kobeleva

Mary Berkelhammer, in honor of Rabbi Andy's birthday

Lois Kotzen, in honor of Rabbi Andy's birthday

Bernice & Zev Harel, in honor of Rabbi Andy's birthday

Oneg Shabbat Fund

Vickie & Afrique Kilimanjaro, in honor of Vickie's Special Birthday!

## Social Action Fund

Stuart & Joanne Engelberg, in memory of Brett Shapiro

Terri & Robert Goldberg, in memory of Joan Milman

Michael Winepol Israel Endowment Fund

Sig and Ellen Tannenbaum, in memory of Brett Shapiro

Rhoda & Jay Winepol, wishing Ray and Rebecca a Happy 10th Anniversary and wishing Ray a Happy 50th Birthday

Yahrzeit Plaque

Jacques & Henessy Wayser, in memory of Claudine Roubinowitz Wayser

# April Shabbat & Holiday Service Schedule

Services are livestreamed and in-person, unless otherwise noted.

## Friday, April 5

6:30 p.m. - Shabbat Service at Greene Street

## Saturday, April 6

9:00 a.m. - Chevra Torah with Kaddish *(In-person & on Zoom)*

## Friday, April 12

5:00 p.m. - Shabbat B'yachad

6:30 p.m. - Shabbat Service

## Saturday, April 13

9:00 a.m. - Chevra Torah

*(In-person & on Zoom)*

10:30 a.m. - Shabbat Morning Services *(In-person only)*

## Friday, April 19

6:30 p.m. - Shabbat Service

## Saturday, April 20

9:00 a.m. - Chevra Torah with Kaddish *(In-person & on Zoom)*

## Tuesday, April 23

4:00 p.m. - L'dor Vador Seder

6:00 p.m. - Congregational Seder

## Friday, April 26

6:30 p.m. - Shabbat Service

## Saturday, April 27

9:00 a.m. - Chevra Torah *(In-person & on Zoom)*

10:30 a.m. - Passover Shabbat Morning Services *(In-person only)*

## Monday, April 29

5:45 p.m. - Passover Yizkor Service at Greene Street

## Past Presidents

*Emanuel Sternberger	1907-24	*Raymond Tannenbaum	1970-72	Barry Frank	2000-02
*Sidney Stern, Sr.	1924-46	*Herman Cone, Jr.	1972-74	Sherry Dickstein	2002-04
*Milton Zauber	1946-48	*David Zauber	1974-76	Marc Isaacson	2004-06
*Herbert Falk, Sr.	1948-50	*Arthur Bluethenthal	1976-78	Andrew Brod	2006-08
*George Blankstein	1950-52	*Richard Forman	1978-80	David Delman	2008-10
*Sidney Stern, Jr.	1952-54	*Leonard Guyes	1980-82	Ron Milstein	2010-12
*Herbert Falk, Sr.	1954-56	Arthur Sohn	1982-84	Gail Bernstein	2012-14
*Sidney LeBauer	1956-58	*Benjamin Marks, Jr.	1984-86	Diane Goldstein	2014-16
*Martin Bernstein	1958-60	Richard Levy	1986-88	Paul Mengert	2016-18
*Milton Weinstein	1960	Michael Marshall	1988-90	Amy Thompson	2018-20
*Harold Needle	1960-62	Thomas Cone	1990-92	Amy Epstein	2020-22
*Stanley Frank	1962-64	*Edward Benson	1992-94	*Of blessed memory	
*Lawrence Cohen	1964-66	Miriam Pines	1994-96		
*Marshall Solomon	1966-68	Jerrold Pinsker	1996-98		
Henry Isaacson	1968-70	Neil Belenky	1998-2000		

## Board of Trustees

Paul Benson	President	Marlene Baruch
Andrew Brod	President-Elect	Kim Freedman
Tammie Geier	V.P. of Programs	Hank Gutman
Barb Boyette	V.P. of Education	Harvey Katz
David Delman	V.P. of Operations	Eve Knapp
Gary Wolf	Treasurer	Emily Kranz
Afrique Kilimanjaro	Secretary	Erika Levitan
Amy Epstein	Past President	Kelly Marks
Jerry Plovsky	Membership Co-Chair	Joshua Ritter
Brian Goldberg	Finance Chair	Sue Simmons
Jessie Schlosberg	ECEC Chair	Eric Stine
Marcia Renne	Education Chair	
Bill Moran	Brotherhood President	

It is with great pleasure that we welcome to our Temple Emanuel family



Samuel Roll and Katelyn King  
Gabriel Kussin and Brittany Bailey  
Leslie Scher

### Special Thanks to our Office volunteers...

Thank you for always being willing to help: Paul and Heather Benson, Bernice and Zev Harel, Fern and Sandy Kahn, David Weiner, Steve Scheck, Lon Tytell, Diana and Bob McLeod, and Inez Elliott. If you are interested in volunteering, please contact the office!



## O. HENRY HOTEL

ATTENTIVE STAFF, GRACIOUS AMENITIES



336.854.2000 | OHENRYHOTEL.COM

## PROXIMITY HOTEL

SUSTAINABLE STYLE



336.379.8200 | PROXIMITYHOTEL.COM



GREEN VALLEY GRILL.

INFORMALLY ELEGANT,  
ZESTFUL DINING

## LUCKY 32.

SOUTHERN KITCHEN

SEASONAL FARM-TO-FORK  
SOUTHERN DINING



EXTRAORDINARY FLAVORS,  
VIBRANT DINING

FOR ALL OF YOUR REAL ESTATE NEEDS

### ITSIK MAARAVI

BROKER/REALTOR

(336) 686-1927

itsikmaaravi@gmail.com



### Private Duty Nursing Care

Maryam Poplavsky

Licensed CAN II

20 years experience

(336) 988-6774

[mar27408@yahoo.com](mailto:mar27408@yahoo.com)

### DELMAN & COMPANY

Certified Public Accountants  
3201 Brassfield Road, Suite 300  
Greensboro, NC 27410

Tel: (336) 540-1990

[www.delmanandcompany.com](http://www.delmanandcompany.com)

TAXES & ESTATES,  
ACCOUNTING & BOOKKEEPING,  
MANAGEMENT ADVISORY SERVICES,  
COMPUTER CONSULTING

LET DELMAN & COMPANY  
HELP YOU PLAN YOUR  
TOMORROW...TODAY!



**IVAN SAUL CUTLER**  
Chief Newz Officer Photographer

**MakingNewz!**

Strategic Communications  
Informs • Guides • Educates

Direct 336.337.5868

[ivan@makingnewz.com](mailto:ivan@makingnewz.com)



# Flow Lexus proudly supports Temple Emanuel

Flow Lexus of Greensboro

825 Norwalk Street

Greensboro, NC 27407

(336) 217-5400

[www.flowlexusofgreensboro.com](http://www.flowlexusofgreensboro.com)

Add a Splash of Creativity



336.545.5400  
[WELL-SPRING.ORG](http://WELL-SPRING.ORG)



FLOW LEXUS



# Our State

CELEBRATING NORTH CAROLINA





**>> SAVINGS  
YOU CAN  
SAVOR.**

**CD SPECIAL OFFERS  
from Blue Ridge Bank.**

<b>5.25%</b> APY*	<b>10-MONTH TERM</b>
<b>4.75%</b> APY*	<b>15-MONTH TERM</b>
<b>4.50%</b> APY*	<b>23-MONTH TERM</b>

**See a BRB representative for more details  
or visit [MYBRB.BANK/cdspecialoffer](https://mybrb.bank/cdspecialoffer)**

**BRB Greensboro branch:** 202 Northline Avenue Greensboro, NC 27408



\*Annual Percentage Yield (APY) accurate and effective as of 10/6/2023. This is a limited time offer and may be withdrawn at any time. Minimum balance to open and to obtain APY is \$1,000. Certain restrictions and conditions may apply. Fees may reduce earnings. All figures in examples are for product explanation and are based on a 10-month, 15-month and 23-month term. Ask us for complete details.




**BAR LUHMANN'S  
REVOLUTIONARY FILM COMES TO LIFE**

**TRUTH | BEAUTY | FREEDOM | LOVE**

**MOULIN  
ROUGE!**

**THE MUSICAL!**

**APRIL 16-28**

**TANGERCENTER.COM**

Best availability remains for April 23-28.

**FIRST BANK  
BROADWAY**  
THE 2023-24 SEASON AT TANGER CENTER

© 2024 Global Creatures. Moulin Rouge® is a registered trademark of Moulin Rouge. Photos by Matthew Murphy and Evan Zimmerman.



**Temple Emanuel**  
**1129 Jefferson Road**  
**Greensboro, NC 27410**

(336) 292-7899

www.tegreensboro.org

Address Service Requested



Nonprofit  
 Organization  
 U.S. Postage  
 PAID  
 Greensboro  
 North Carolina  
 Permit No. 24

### **Rabbis**

**Andy Koren**, *Senior Rabbi*

**Libby Fisher**, *Rabbi & Director of Education*

**Fred Guttman**, *Rabbi Emeritus*

### **Staff**

**Laura Denhardt**, *Executive Director*

**Cassie Silverman**, *Director of*

*Early Childhood Engagement*

**Brenda Henley**, *Director of*

*Congregational Services*

**Natasha Kobeleva**, *Controller*

**Shira Snyder**, *Program Coordinator*

**Brooklyn Flatt**, *Kesher Administrative Assistant*

**Mark Sonntag**, *Operations Manager*

**Lorena Harriott**, *Facilities*

### **Mission Statement**

Temple Emanuel strives to be a place of *Keruv*, of closeness to God and Jewish culture. Temple Emanuel's mission is to bring its congregants closer to: *Tikkun Olam* - The commitment to repair God's world through the pursuit of justice; *Tikkun Nefesh* - Personal and spiritual growth as a Jew and as a human being; *Talmud Torah* - Life-long study of Torah and of Jewish history and tradition; *Am Yisrael* - The Jewish people, in Greensboro, the United States, Israel, and worldwide; *Eretz Yisrael* - The land, people, and the state of Israel; *Mishpacha* - A sense of extended family through a warm and supportive atmosphere and Reform Judaism - Its principles and values.

### **Diversity and Inclusivity Statement**

Temple Emanuel is committed to inclusivity: *Hachnasat Orchim* (Hospitality) means welcoming people of different cultural backgrounds, races, nationalities, sexual orientations, genders, gender identities, gender expressions, physical and mental abilities, and ages. We recognize Jewish identity from both matrilineal and patrilineal descent. Our Rabbis are open to officiating at Jewish ceremonies for interfaith marriages. Appreciating the critical role played by non-Jewish parents in the upbringing of Jewish children, we encourage full participation in congregational and religious life by interfaith families.

### **Donation Opportunities**

I would like to donate \$\_\_\_\_\_ in memory/honor (circle one) of \_\_\_\_\_

To: \_\_\_\_\_ Address: \_\_\_\_\_

From: \_\_\_\_\_ Address: \_\_\_\_\_

- |  |   |  |
|--|---|--|
| <input type="checkbox"/> Archives Fund                     | <input type="checkbox"/> John & Vickie Kilimanjaro          | <input type="checkbox"/> Rabbi Fisher's Discretionary Fund |
| <input type="checkbox"/> Brad Starr Memorial Campership    | <input type="checkbox"/> Library Endow.                     | <input type="checkbox"/> Religious School                  |
| <input type="checkbox"/> Capital Improvements              | <input type="checkbox"/> Richard & Jane Levy Library        | <input type="checkbox"/> Robyn Weissburg Jewish            |
| <input type="checkbox"/> Celia, Leo & Sarah Jill Goldfarb  | <input type="checkbox"/> Endowment                          | <input type="checkbox"/> Education Endowment               |
| <input type="checkbox"/> (Pre-School)                      | <input type="checkbox"/> March of the Living Scholarship    | <input type="checkbox"/> Rosh Hodesh: It's A Girl Thing!   |
| <input type="checkbox"/> Cemetery Perpetual Care           | <input type="checkbox"/> Michael Winepol Israel Endowment   | <input type="checkbox"/> Security                          |
| <input type="checkbox"/> Cemetery Capital Improvement      | <input type="checkbox"/> Mitzvah Day                        | <input type="checkbox"/> Social Action                     |
| <input type="checkbox"/> Chesed (Caring Community)         | <input type="checkbox"/> Oneg Shabbat                       | <input type="checkbox"/> The Temple (Greene Street)        |
| <input type="checkbox"/> David Geier Teen Advocacy Fund    | <input type="checkbox"/> Past Presidents' Endowment         |  |
| <input type="checkbox"/> Early Childhood Engagement Center | <input type="checkbox"/> Prayerbook: High Holy Day/Shabbat  |  |
| <input type="checkbox"/> Friendship Circle                 | <input type="checkbox"/> Pulpit Flowers                     |  |
| <input type="checkbox"/> General Fund                      | <input type="checkbox"/> Rabbi Guttman's Discretionary Fund |  |
| <input type="checkbox"/> Kate S. & Charles Pearl (Music)   | <input type="checkbox"/> Rabbi Fred Guttman T.E. Endowment  |  |
|  | <input type="checkbox"/> Rabbi Koren's Discretionary Fund   |  |

#### **Additional donation opportunities:**

- ☐ Tree of Life Engraved Leaf (\$125)  
☐ Memorial Plaque (\$300)